



Menotti Street, London, E2

BUTLER & STAG



Short Let 3 Months **Well presented two** **double bedroom** **apartment in a sought-** **after location** **overlooking Weavers** **Fields.**



- Short Let of 3 Months
- First Floor
- Close to Transport Links
- Furnished
- Two Double Bedroom Apartment
- Vibrant Bethnal Green Location
- Views of Weavers Field Park
- Available Immediately

Situated on a quiet residential street yet moments from the vibrancy of Bethnal Green, Shoreditch, and Brick Lane, this property offers the best of both worlds—peaceful surroundings with excellent access to East London's cultural, dining and transport hubs.

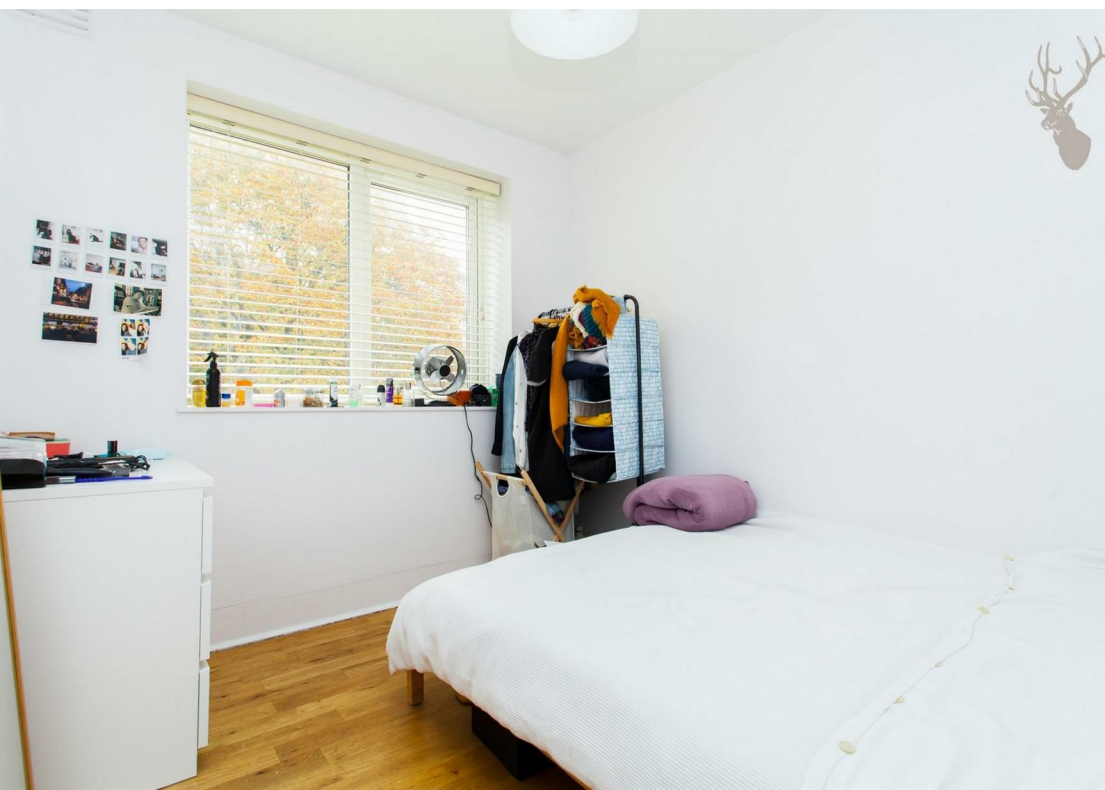
Featuring two double bedrooms and therefore perfectly suited to two sharing professionals or a couple, the property is positioned on the first floor and is completed by a spacious living/dining room, fitted kitchen and a smart bathroom.

Situated close to Bethnal Green Overground station, Whitechapel station with its underground and Elizabeth Line services, is also within easy reach.

Offered furnished and available now!

EPC Rating C
Council Tax Band B





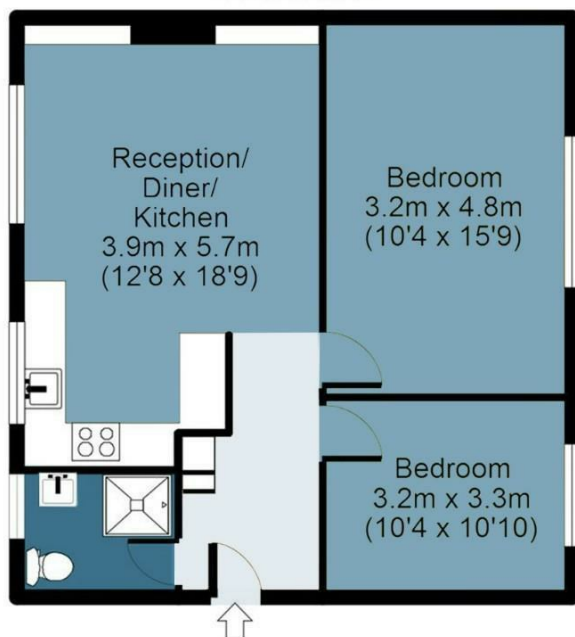
Menotti Street

Approx. Gross Internal Area 52 Sq M (560 Sq Ft)

BUTLER & STAG



First Floor



Measurements are approximate and for illustration purposes only. While we do not doubt the accuracy and completeness, we advise you conduct a careful independent assessment of the property to determine monetary value.
© @modephoto.uk www.modephoto.co.uk

IMPORTANT NOTICE - These particulars have been prepared in good faith and they are not intended to constitute part of an offer or contract. We have not performed a structural survey on this property and the services, appliances and specific fittings have not been tested. All photographs, measurements, floor plans and distances referred to are given as a guide and should not be relied upon.

BUTLER & STAG

☎ 020 8102 1236

🏠 508 Roman Road, Bow, London, E3 5LU

✉ bow@butlerandstag.com

www.butlerandstag.uk